



85 Pike St. (in Post Alley), Seattle 98101 | 206 623 3180 | [www.seattlealibi.com](http://www.seattlealibi.com)

**FOR IMMEDIATE RELEASE**

**NOVEMBER 21, 2006**

**John Berry's Timeless 'Refugees of Fundamentalism' at the Alibi Room**

Contact: Sarah Kavage, Curator  
206 547 6433  
[sarah@gogoweb.com](mailto:sarah@gogoweb.com)

Show Dates: November 2 – December 31, 2006  
Opening: First Thursday, December 7, 6 – 12 pm

The Alibi Room is proud to present recent paintings by multimedia artist and composer John Berry.

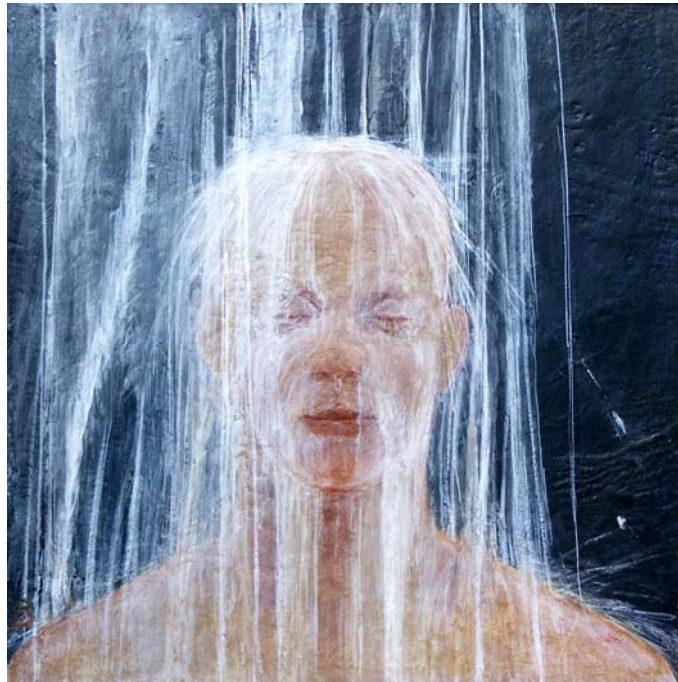
John Berry's paintings exist refreshingly out of fashion and out of time. Berry uses classical techniques to create images that are at once minimal and luxurious, contemporary and classical. This recent body of work glows with intrigue and evokes the sadness and despair of the outsider living in a morally censorious society. The bohemians portrayed in Berry's paintings exist as time travelers, fleeing the present to be immortalized by a sympathetic Renaissance painter.

Prior to the current show, Berry spent six months in Helsinki and Amsterdam, developing the installation performance *the golden cross of the creatives diaspora*, which was installed at oxygen room o2 ([www.nettisuvit.fi](http://www.nettisuvit.fi)), in Helsinki and at Chris Evans' existentialist retreat at the Stadelijk Museum in Amsterdam ([www.smba.nl](http://www.smba.nl)). A multimedia sound piece based partially on this work will be performed in the Alibi Room's downstairs bar during the opening reception, starting at 9 pm. DJ Pauly D will be spinning upstairs starting at 10.

The Alibi Room is open seven nights a week, 4 pm – 2 am.

For more information, see:  
[www.outerwaters.com](http://www.outerwaters.com)

###



*Water*, 2006 | 30 x 30" | acrylic on panel